

Fig. 1

FORBT" 99E08660

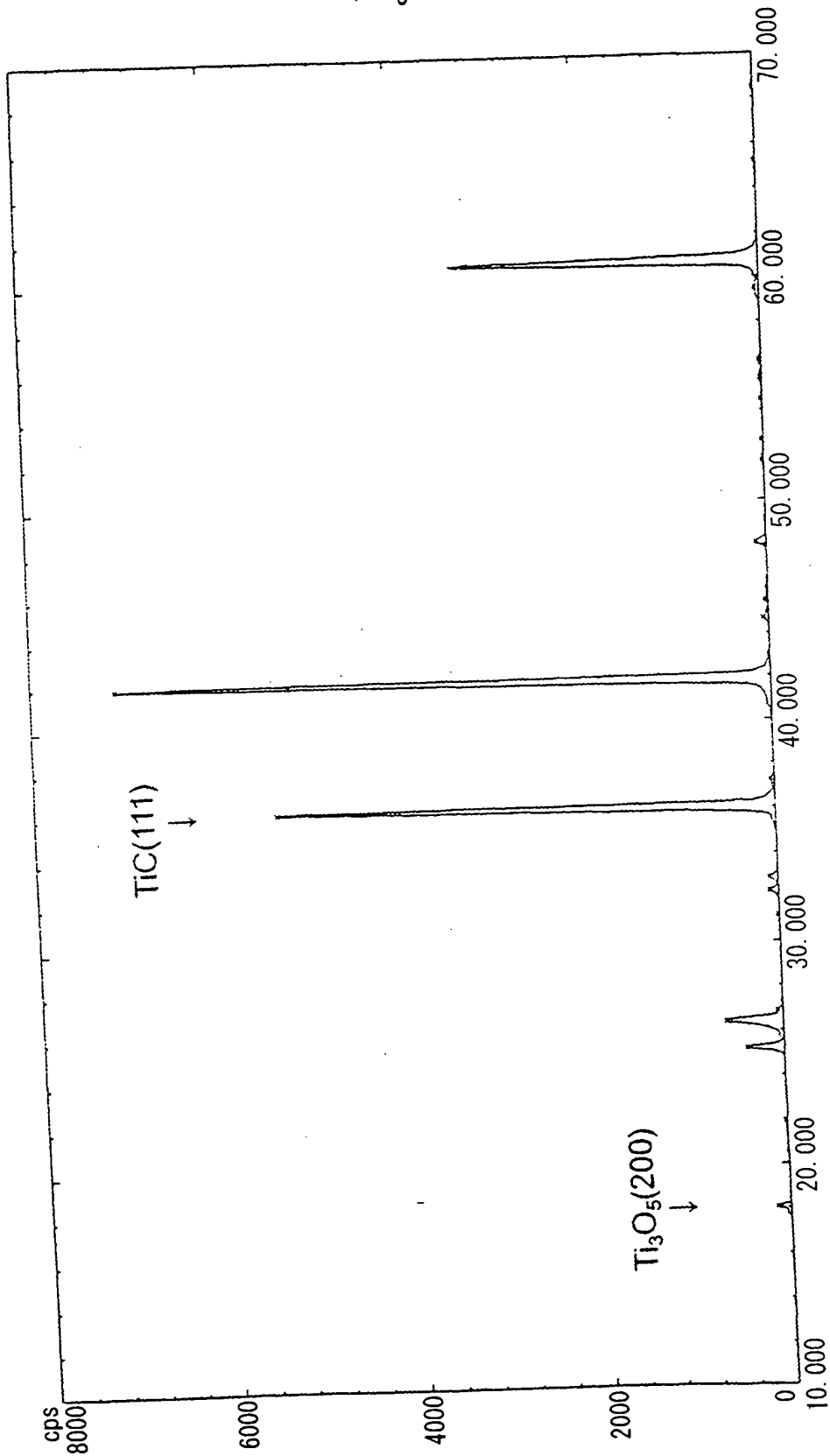


Fig. 2

FOBET" 99E0860

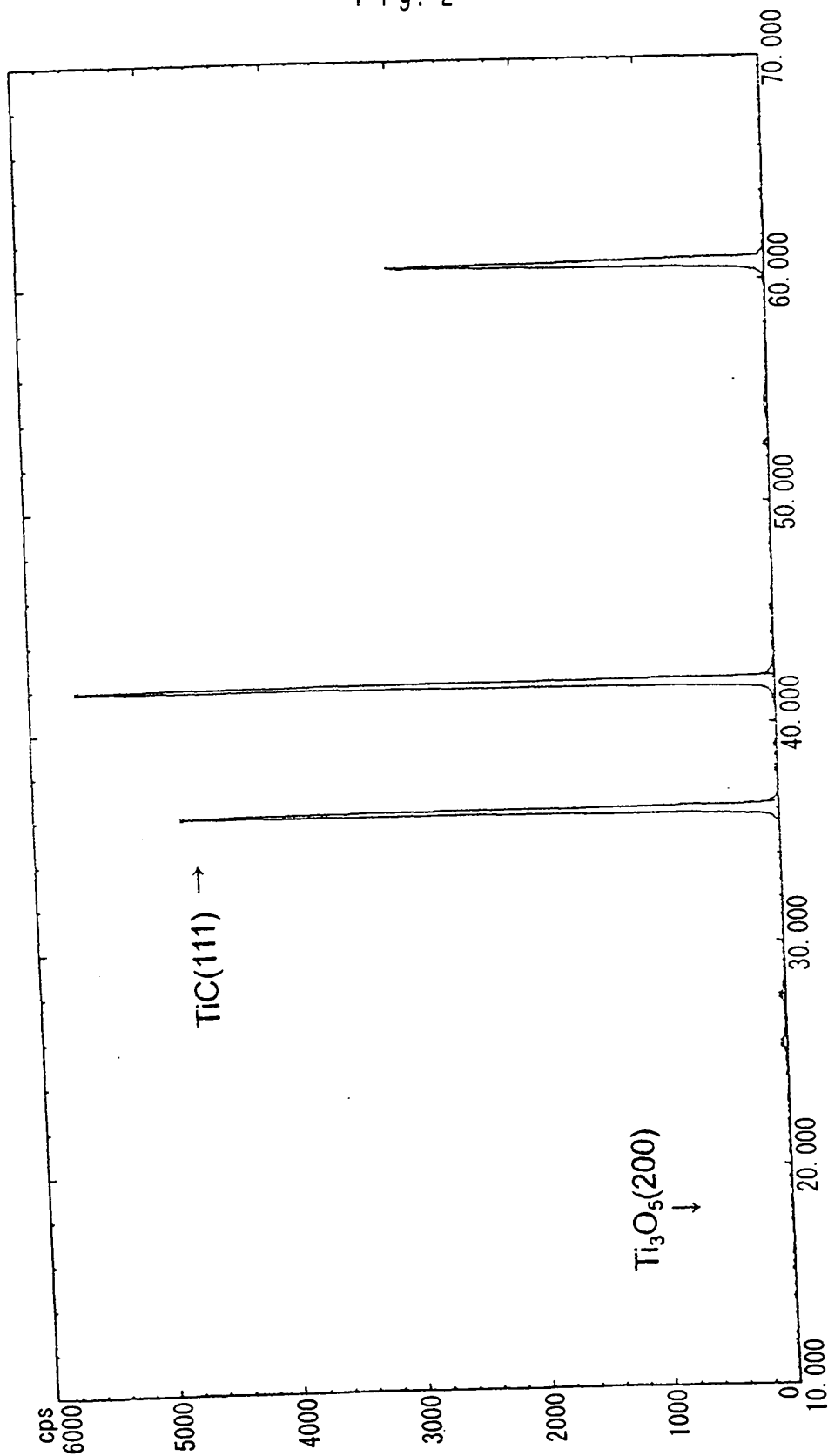


Fig. 3

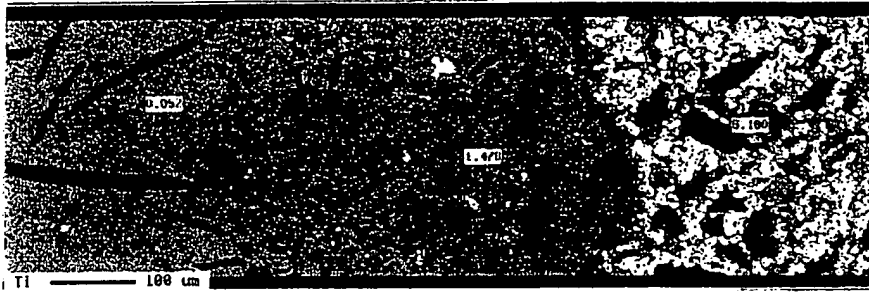
SEM



CP	Level	Area/
	1750	0.0
	1681	60.4
	1612	2.3
	1543	2.7
	1475	3.0
	1406	0.2
	1337	71.8
	1268	0.2
	1200	0.0
Area		1597

(Melted pig iron) ← (Interface protective layer) → (Carbonaceous Refractory material)

Ti



Ti	Conc	Area/
	10.000	7.5
	8.750	0.3
	7.500	1.1
	6.250	1.5
	5.000	1.6
	3.750	2.2
	2.500	2.0
	1.250	3.0
	0.000	15.3
Area		7.266

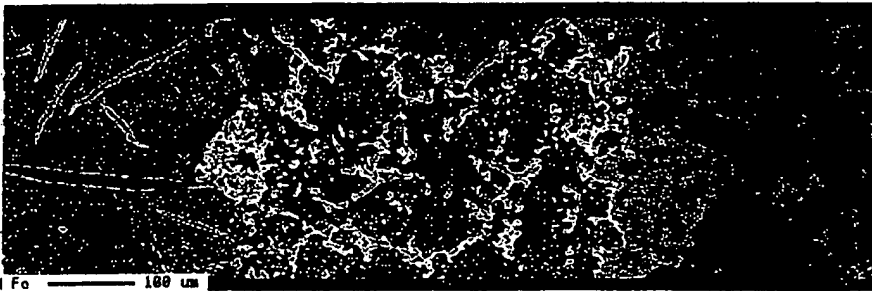
Protective layer : Ti 1.478 %

C



C	Level	Area/
	5000	33.9
	4437	1.0
	3875	1.0
	3312	1.2
	2750	1.2
	2187	1.3
	1625	1.6
	1062	2.0
	500	4.5
	0	52.1
Area		6745

Fe



Fe	Conc	Area/
	100.00	1.7
	87.50	45.3
	75.00	4.5
	62.50	1.2
	50.00	2.6
	37.50	2.2
	25.00	2.0
	12.50	2.9
	0.00	1.1
	0.00	22.1
Area		50.46

09980366-112801